

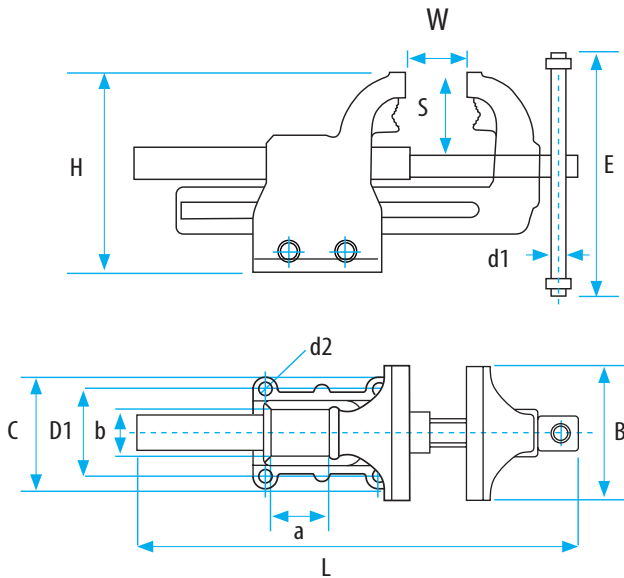


K2 Plumber's Vice

High quality Vice made from drop forged steel and surfacehardened for long life. The double acme thread screw allows faster adjustment of the jaw opening and is enclosed to keep dirt and debris out of the mechanism.

K2 Vises are available with jaw widths from 4" to 7".

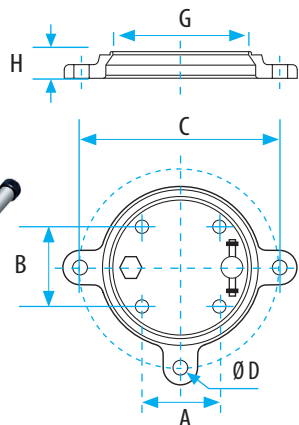
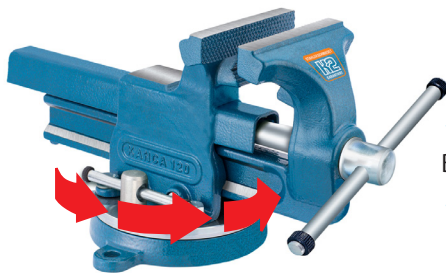
Solid Body: Drop-forged from high quality steel. Drop forged. Induction hardened. Solid with the body. Ideal for straightening or similar jobs requiring strong and flat surface.



SIZE		K2-100	K2-120	K2-140	K2-160	K2-180
Jaw With	B (inch)	4"	4.5"	5.5"	6"	7"
Jaw Opening	W (inch)	4.5"	4.5"	7.5"	8.5"	8.5"
Total Length	L (inch)	16.5"	20.5"	26"	30"	30"
Anvil Size	axb (inch)	1 x 1.5"	1.88 x 1.65"	2.2 x 2.1"	2.7 x 2.2"	2.7 x 2.2"
Base Diameter	C (inch)					
Distance	Ø D1 (inch)	3.5"	4"	5.5"	5.5"	5.5"
Hole Diameter	Ø d2 (inch)	.35"	.5"	.5"	.55"	.55"
Screwhandle	Ø d1 (inch)	.5"	.5"	.6"	.7"	.7"
Jaw Depth	S (inch)	2"	2.5"	3"	4"	4"
Vise Height	H (inch)	5"	6.5"	7.5"	9"	9"
Handle Length	E (inch)	7.4"	9"	12.2"	12.4"	12.4"
Weight	lbs.	11	20	35.2	57.3	57.3
Clamps from *2 inch		16"	16"	18"	18"	18"
Clamps to *2 inch		40"	58"	80"	98"	98"

Swivel Base

Bench Vice With Swivel Base



Plastic Part	Size (inch)	A	B	C	H	D Ø	lbs.	Metal Part
K2SP-100	4"	2"	2.5"	6"	1"		3.7	K2S-100
K2SP-120	4.5"	2.5"	3.5"	7"	1.2"		5.9	K2S-120
K2SP-140	5.5"	3.5"	4.5"	8.5"	1.1"		7.3	K2S-140
K2SP-160	6"	4.5"	5"	9.5"	1.5"		13	K2S-160
K2SP-180	7"	4.5"	5"	9.5"	1.5"		13	K2S-180



Plastic



Metal

Swivel Base: Drop forged, infinitely variable rotation between 0° and 360°. Position lockable by special bolt- screw arm. Suitable also for other brands.